

Appendix 1: Site Location Plan

Application No: 6/2014/0437

Bere Regis Primary School, off Southbrook, Bere Regis, Dorset

Erect new school and pre-school in field at end of Egdon Close and construct new access drive to it along Souls Moor.



Appendix 2: Block Plan

Application No: 6/2014/0437

Bere Regis Primary School, off Southbrook, Bere Regis, Dorset

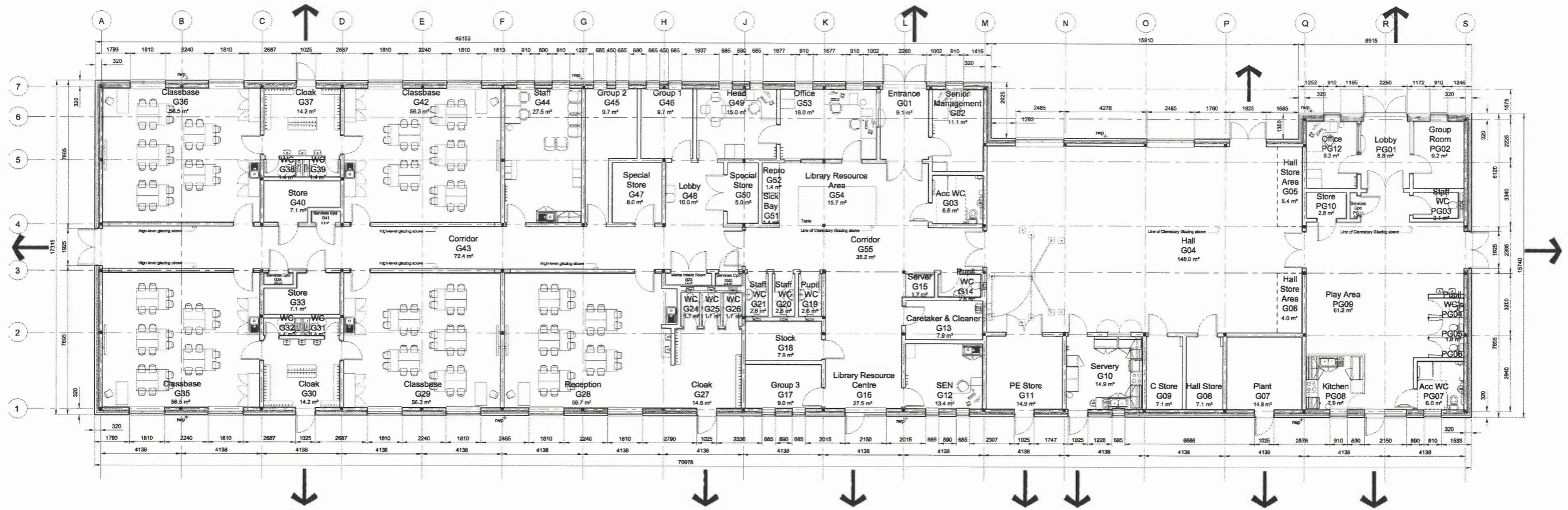
Erect new school and pre-school in field at end of Egdon Close and construct new access drive to it along Souls Moor.



ENVIRONMENT AND THE ECONOMY

Matthew Piles
Head of Economy

GIFA - 977m² Primary School
122m² Pre-School



Proposed Floor Plan

Appendix 3: Proposed Floor Plan

Application No: 6/2014/0437

Bere Regis Primary School, off Southbrook, Bere Regis, Dorset

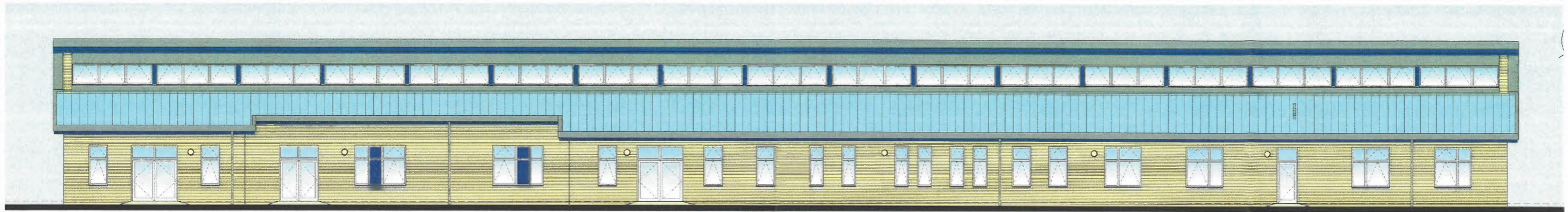
Erect new school and pre-school in field at end of Egdon Close and construct new access drive to it along Souls Moor.



Dorset County Council

ENVIRONMENT
AND THE ECONOMY

Matthew Piles
Head of Economy



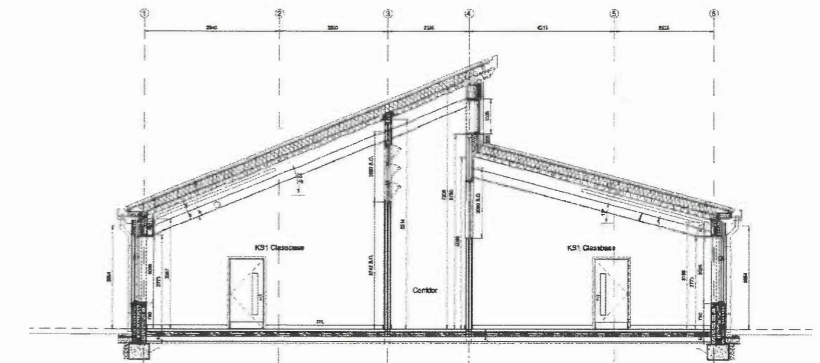
North East Elevation



South East Elevation



North West Elevation

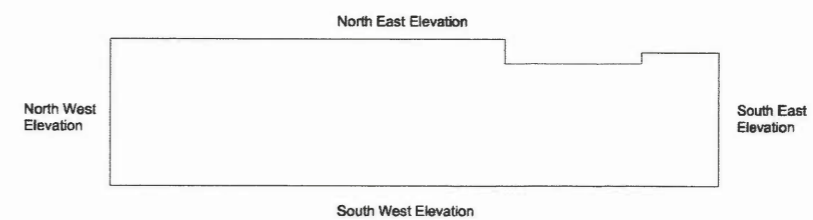


Typical Section



South West Elevation

Key Plan to Elevations



Materials
 Walls - brick, colour buff
 Roof - metal profiled roof, flashings and gutters, colour pale blue and grey
 Rainwater Goods - aluminium or galvanised steel
 Windows and Doors - aluminium and wood composite

Appendix 3 : Proposed Elevations

Application No: 6/2014/0347

Bere Regis Primary School, off Southbrook, Bere Regis, Dorset

Erect new school and pre-school in field at end of Egdon Close and construct new access drive to it along Souls Moor.



Dorset County Council

ENVIRONMENT
AND THE ECONOMY

Matthew Piles
Head of Economy